

Additional Information



Day Camp is in session Monday through Friday 9:30 am to 3:30 pm. Campers meet at the Stifel Playground and will utilize all Wheeling Park facilities throughout the camp season. Pre-school campers will attend half-day camp and may be picked up at 12:30 pm at the pool. Alternatively, aftercare is available for pre-schoolers.

Each camper should wear tennis shoes, bring a towel, swim suit and lunch. A beverage will be provided and is included in the camp fee. Campers are to have all personal belongings clearly marked with last name to avoid loss.



Day Camp Fees

The Day Camp fee covers all costs including activity fees and beverage. Fees must be paid on day of registration at the Main Office in the White Palace. In an effort to provide a safe environment for your child and/or children, we require that every child be signed in and out of camp by a parent or guardian.

Paid in Advance:

Additional Child

Full Day	9 Weeks	\$530.00	\$400.00
	6 Weeks	415.00	300.00
	1 Week	80.00	
	1 Day	17.00	

Preschool (Half Day)	9 Weeks	\$270.00	\$215.00
	6 Weeks	230.00	175.00
	1 Week	42.00	
	1 Day	9.25	

All rates subject to additional fees & taxes.

Wheeling Park
1801 National Road
Wheeling, WV 26003

Wheeling Park

Day Camp



June 4 - August 3, 2012

Wheeling Park

1801 National Road
Wheeling, WV 26003
304-243-4085
Fax: 304-243-4189
www.wheeling-park.com

Welcome to Wheeling Park Day Camp!

Wheeling Park Day Camp has been a favorite childhood tradition in the Ohio Valley for many years. The program provides children the opportunity to participate in games, make crafts, swim, and enjoy all that beautiful Wheeling Park has to offer.



Experienced Staff

Our staff of Directors, Craft Coordinators, and Counselors have many years of experience working with children of all ages and abilities.



We pride ourselves in offering a camp experience that is safe, activity-filled and most importantly, fun!

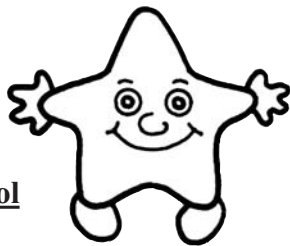
Rainy Days

The rain won't stop us from having fun! Rainy Day activities are held at the Wheeling Park Ice Rink.

Available Programs

Full Day

- Ages 6 - 13 (1st - 7th Graders)
- 9:30 am - 3:30 pm
- 10-15 campers per Counselor



Half Day Preschool

- 4 and 5 Year Olds
- 9:30 am - 12:30 pm
- 6:1 child to adult ratio

Before & After Care

Times

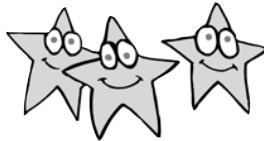
- Before Care: 7:30 am - 9:30 am
- After Care:
Pre-School 12:30 pm - 5:30 pm
Camp 3:30 pm - 5:30 pm

Costs

Daily: First child: \$2 per hour
Additional children: \$1 per hour

Unlimited: First child: \$185
Additional children: \$135

(We recommend unlimited for working families.)



The Before and After Care Program is not included in the camp fee. This special care program is provided in the White Palace Teen Center.

Fees must be paid daily, prior to camp. Snacks available by purchase only.

Day Camp Activities

- Swimming
- Miniature Golf
- Crafts
- Arcade Games
- Pedal Boating

Girls and boys are divided into groups by age. Each child is placed in a group of approximately ten children with one counselor. Group size varies according to age. Younger children are placed in slightly smaller groups and older children in slightly larger groups.

Special Events:

Day Camp wouldn't be complete without special activities! We try very hard to keep well-loved camp traditions but also plan new and exciting activities for the campers each year. Events include:

- All day swims
- Scavenger hunts
- Wheeling Park - style Olympics
- Exciting challenges
- Traditional tie dye days
- Trip to the zoo for the entire camp
- Fun Crafts
- Cooking class for boys and girls
- Carnival
- And much, much more!!!

